

BATTERY CHARGE LEVEL

1 - CHECKING THE CHARGE STATUS

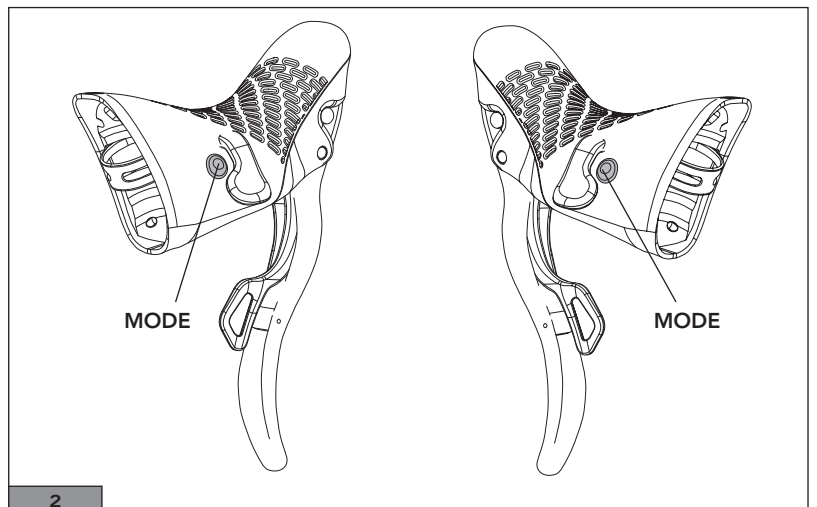
The indicator lamp, which is normally OFF during operation, can display the residual battery charge level or any EPS unit faults (Fig. 1).

IMPORTANT!






WHEN YOU RECEIVE THE NEW BICYCLE, PERFORM A COMPLETE CHARGE CYCLE FOR THE EPS UNIT BATTERY BEFORE USING THE BICYCLE.

As shown in the BATTERY CHARGE LEVEL table, the indicator lamp displays the residual battery charge when requested - when one of the two "mode" buttons on the two EPS controls is pressed briefly (Fig. 2).




- If the bicycle is not being used but the EPS system is ON, the indicator lamp will flash briefly with a low frequency red light, at pre-determined intervals, when the residual battery charge falls below the 6% threshold (Fig. 3).
- If the bicycle is being used, the indicator lamp will light up briefly at pre-determined intervals (every 5 minutes) when the residual battery charge falls below the 6% threshold (Fig. 3).
- During recharging (i.e. while the battery charger is connected), the indicator lamp remains lit and continuously displays the battery charge level.



2 - LED

LED	DESCRIPTION	CHARGE LEVEL
	CONTINUOUSLY LIT GREEN LED	FROM 100 % TO 60 % CHARGE
	FLASHING GREEN LED (low frequency)	FROM 60 % TO 40 % CHARGE
	CONTINUOUSLY LIT YELLOW LED	FROM 40 % TO 20 % CHARGE
	CONTINUOUSLY LIT RED LED	FROM 20 % TO 6 % CHARGE
	FLASHING RED LED (low frequency)	FROM 6 % TO 0 % CHARGE

AVERAGE DURATION OF THE BATTERY FOR USE ON THE ROAD

	OCCASIONAL USE:	1100 km
	NORMAL USE:	1450 km
	FREQUENT USE:	1700 km

RANGE IN KM IS VARIABLE DEPENDING ON THE OUTDOOR TEMPERATURE AND CONDITIONS OF USE.

Battery charge times from a charge of 0-6 % to 100%: about 4 hours.